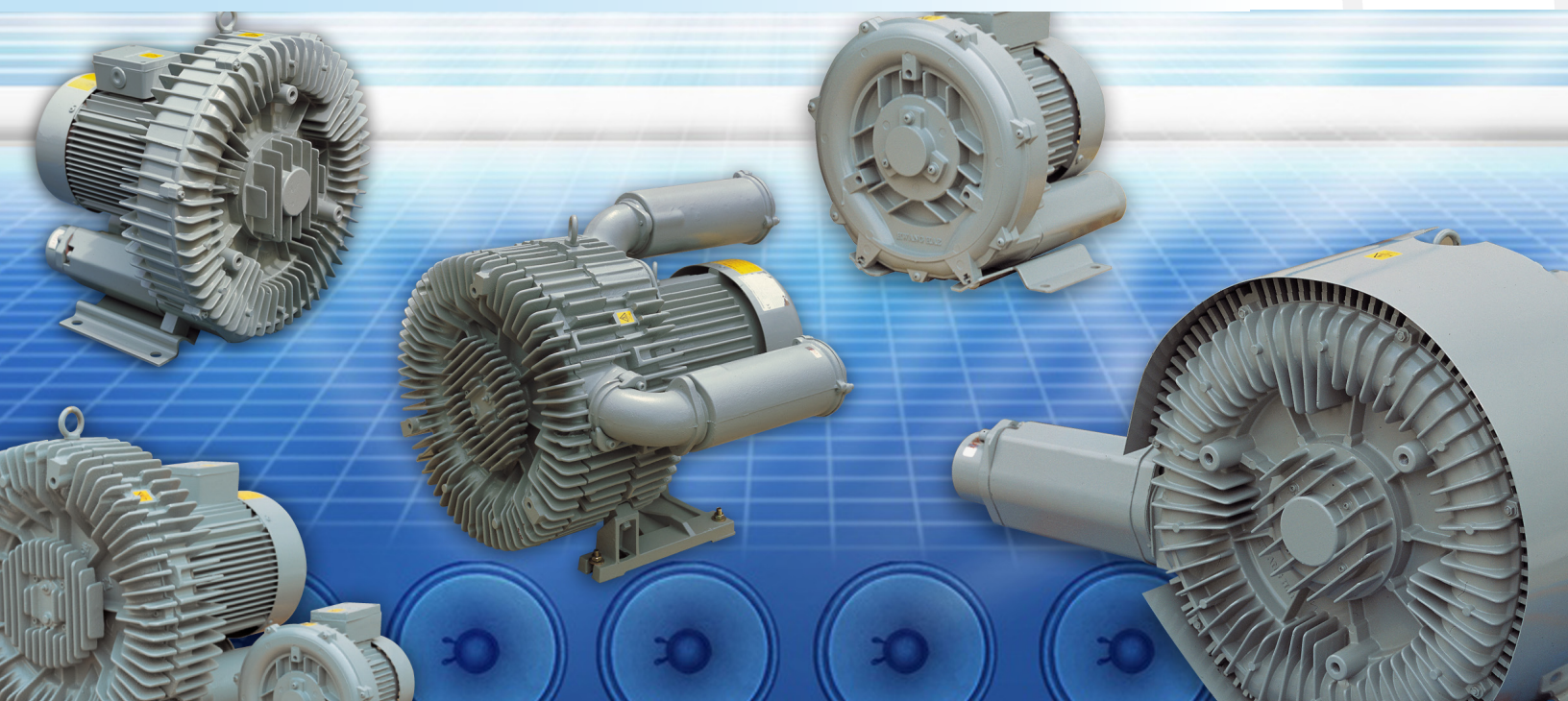
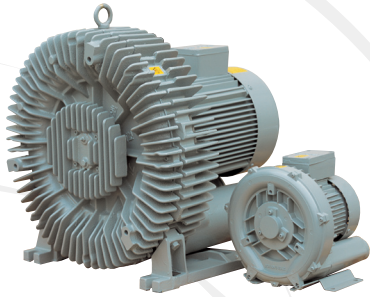


# Republic Regenerative Blowers

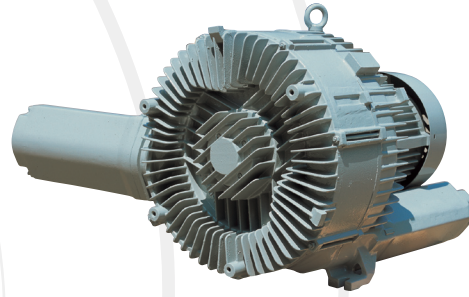


**REPUBLIC**  
*Blower Systems*®

# Republic Regenerative Blowers



## Single Stage



## Double Stage

**Republic Regenerative Blowers** are available in either single (one impeller) or double (two impeller) stage configurations. The impeller is directly connected to the motor shaft, providing powerful force without undue friction. The bearings are outside the compression chamber, ensuring maximum operational reliability under high differential pressure. This low-maintenance, oil-free design provides continuous, dependable service to our customers.

- ▲ **Belt-driven bare shaft blowers are available**
- ▲ **Explosion-proof motors are available**  
(Class 2/Group B/Division 1 Certified)

### Functional Performance

#### **Air Flow:**

From 50 cfm up to 1413 cfm

#### **Pressure Capacity:**

From 47" H<sub>2</sub>O up to 307" H<sub>2</sub>O

#### **Vacuum Capacity:**

From 40" H<sub>2</sub>O up to 189" H<sub>2</sub>O

### Operating Principle

Air or gas is pulled into a side channel (1) through the air inlet (2) and is accelerated by an impeller (3) rotating inside the impeller chamber (4). The resulting pressurized air or gas is discharged through the exhaust outlet (5). This type of operation is also known as a "ring" blower design.

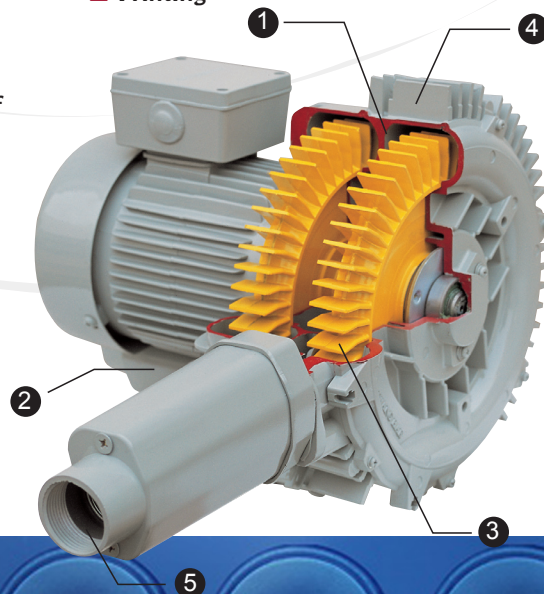
1. Side Channel
2. Air Inlet
3. Impeller
4. Impeller Chamber
5. Exhaust Outlet

### Design Advantages

- ▲ Continuous, low-maintenance operation
- ▲ Low noise (64–88dB)
- ▲ Saves space and electricity
- ▲ Trouble-free installation (mounts in any axial direction)
- ▲ Easy replacement of parts

### Applications

- ▲ Pneumatic Conveying Systems
- ▲ Parts Handling with Vacuum Systems
- ▲ Packaging
- ▲ Sewage Treatment (Aeration) Systems
- ▲ Bottling
- ▲ Fulfillment
- ▲ Thermal Forming
- ▲ Textile Manufacturing
- ▲ Paper Manufacturing
- ▲ Fish Pond Aeration
- ▲ Powder Transportation (Compression)
- ▲ Printing





**Repubic Single Stage Regenerative Blowers**

Model	Phase/Stage	Motor (HP)	Current (A)@110V	Current (A)@220V	Sound Level (dB)	Rated Pressure (in. H <sub>2</sub> O)	Rated Vacuum (in. H <sub>2</sub> O)	Air flow (cfm)	Weight (lbs.)
HRB-101	1	0.50	4.5	2.3	64.00	47.00	40.00	50.00	31.00
HRB-201	1	1.00	6.0	3.0	66.00	47.00	44.00	102.00	46.00
HRB-301	1	2.00	11.5	5.8	75.00	71.00	63.00	141.00	73.00
HRB-401	1	3.00	15.0	7.5	75.00	110.00	79.00	141.00	78.00
HRB-501	1	3.00	15.5	7.8	76.00	83.00	79.00	212.00	82.00
Model	Phase/Stage	Motor (HP)	Current (A)@220V	Current (A)@440V	Sound Level (dB)	Rated Pressure (in. H <sub>2</sub> O)	Rated Vacuum (in. H <sub>2</sub> O)	Air flow (cfm)	Weight (lbs.)
HRB-100	3	0.67	2.4	1.2	64.00	51.00	40.00	50.00	26.00
HRB-200	3	1.25	4.2	2.1	66.00	51.00	47.00	102.00	37.00
HRB-300	3	2.35	6.7	3.4	75.00	79.00	67.00	141.00	68.00
HRB-400	3	3.50	9.5	4.8	75.00	118.00	102.00	141.00	73.00
HRB-500	3	3.50	9.5	4.8	76.00	83.00	87.00	212.00	82.00
HRB-600	3	5.00	14.0	7.0	78.00	118.00	110.00	212.00	89.00
HRB-700	3	6.00	17.0	8.5	76.00	134.00	130.00	212.00	95.00
HRB-750	3	6.00	17.0	8.5	78.00	80.00	80.00	353.00	310.00
HRB-800	3	8.50	22.0	11.0	78.00	110.00	122.00	353.00	318.00
HRB-900	3	11.50	29.0	14.5	78.00	177.00	138.00	353.00	333.00
HRB-1000	3	15.00	40.0	20.0	78.00	248.00	158.00	353.00	366.00
HRB-1100	3	15.00	40.0	20.0	82.00	67.00	71.00	706.00	434.00
HRB-1200	3	20.00	54.0	27.0	82.00	106.00	114.00	706.00	476.00
HRB-1300	3	30.00	76.0	38.0	82.00	169.00	150.00	706.00	505.00

**Repubic Two Stage Regenerative Blowers**

Model	Phase/Stage	Motor (HP)	Current (A)@110V	Current (A)@220V	Sound Level (dB)	Rated Pressure (in. H <sub>2</sub> O)	Rated Vacuum (in. H <sub>2</sub> O)	Air flow (cfm)	Weight (lbs.)
HRB-102/1	1	0.50	4.5	2.3	68.00	47.00	40.00	58.00	40.00
HRB-202/1	1	1.00	6.0	3.0	68.00	83.00	67.00	58.00	45.00
HRB-302/1	1	1.50	7.0	3.5	68.00	98.00	79.00	58.00	51.00
HRB-402S/1	1	2.00	11.5	5.8	75.00	98.00	95.00	113.00	82.00
HRB-402/1	1	3.00	15.0	7.5	75.00	138.00	102.00	113.00	87.00
Model	Phase/Stage	Motor (HP)	Current (A)@220V	Current (A)@440V	Sound Level (dB)	Rated Pressure (in. H <sub>2</sub> O)	Rated Vacuum (in. H <sub>2</sub> O)	Air flow (cfm)	Weight (lbs.)
HRB-102	3	0.67	2.4	1.2	68.00	59.00	40.00	58.00	34.00
HRB-202	3	1.20	4.2	2.1	68.00	98.00	80.00	58.00	36.00
HRB-302	3	2.00	5.9	3.0	68.00	118.00	87.00	58.00	43.00
HRB-402S	3	2.35	6.7	3.4	75.00	110.00	110.00	113.00	78.00
HRB-402	3	3.50	9.5	4.8	71.00	158.00	118.00	113.00	83.00
HRB-502	3	3.50	9.5	4.8	78.00	118.00	110.00	145.00	94.00
HRB-602	3	5.00	14.0	7.0	78.00	165.00	161.00	145.00	100.00
HRB-702	3	6.00	17.0	8.5	78.00	197.00	169.00	145.00	102.00
HRB-802	3	6.00	17.0	8.5	80.00	138.00	150.00	215.00	126.00
HRB-902	3	8.50	22.0	11.0	80.00	197.00	170.00	215.00	172.00
HRB-1002	3	11.50	29.0	14.5	80.00	256.00	177.00	215.00	188.00
HRB-1102	3	16.90	40.0	20.0	82.00	244.00	170.00	353.00	485.00
HRB-1202	3	23.20	56.0	28.0	82.00	307.00	181.00	353.00	501.00
HRB-1112	3	16.80	45.0	22.5	80.00	118.00	118.00	530.00	551.00
HRB-1212	3	23.20	56.0	28.0	86.00	157.00	138.00	530.00	545.00
HRB-1302	3	20.00	54.0	27.0	88.00	87.00	99.00	776.00	618.00
HRB-1402	3	25.00	65.0	32.5	88.00	118.00	134.00	776.00	651.00
HRB-1502	3	35.00	82.0	41.0	88.00	189.00	189.00	776.00	684.00
HRB-1503	3	20.00	54.0	27.0	85.00	40.00	40.00	1413.00	600.00
HRB-1603	3	30.00	80.0	40.0	85.00	71.00	71.00	1413.00	670.00
HRB-1703	3	40.00	104.0	52.0	85.00	94.00	94.00	1413.00	770.00

The electric motors used in these blowers are AC motor equipped with self-cooling fans and rated as "F" class with IP54 protection.

The above specifications may be changed without notice for improved product performance.

# 50 Hz Vacuum Curve

mbar

inchH2O

800

700

600

500

400

300

200

100

200

100

70

60

50

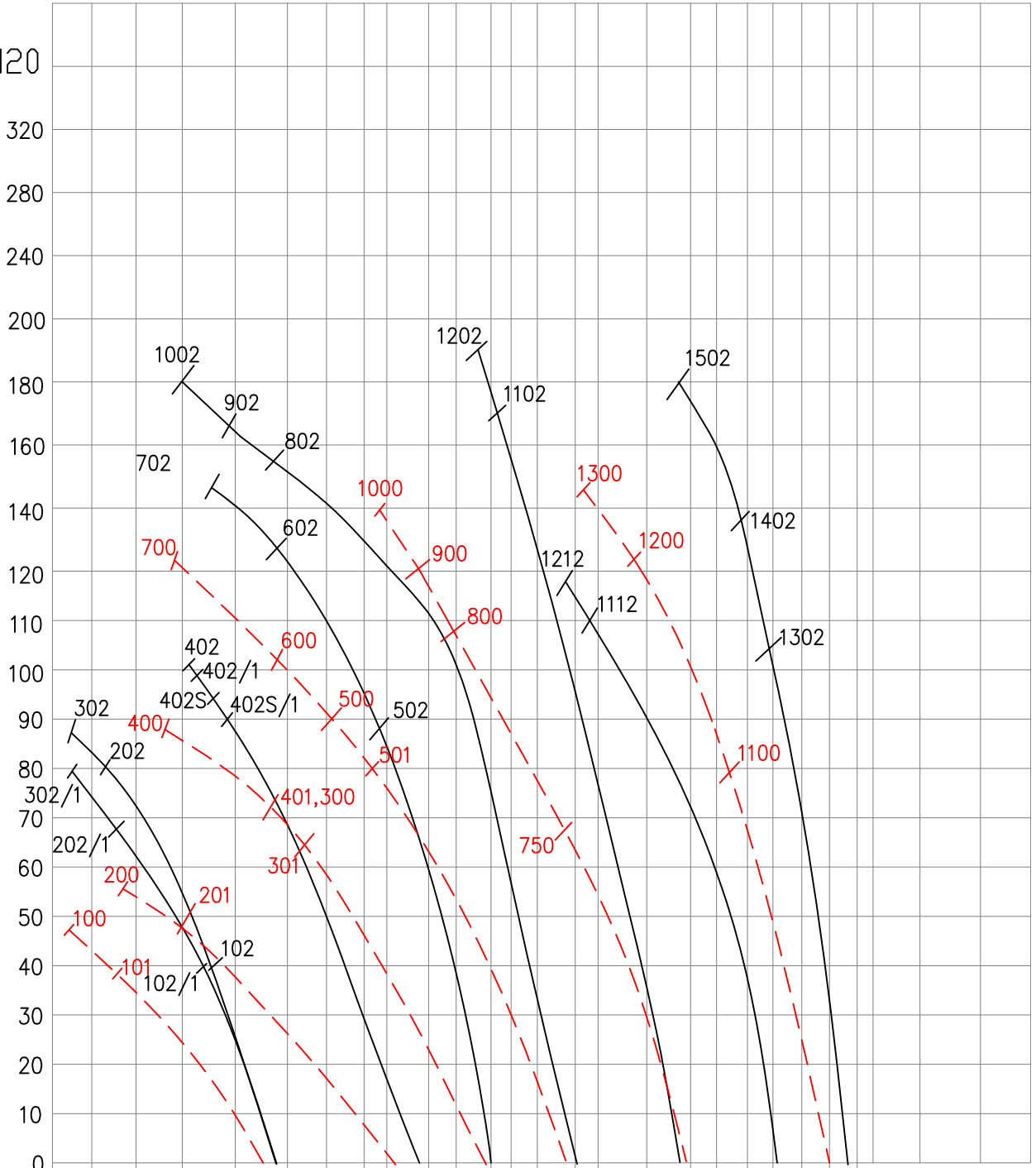
40

30

20

10

0



ft<sup>3</sup>/min

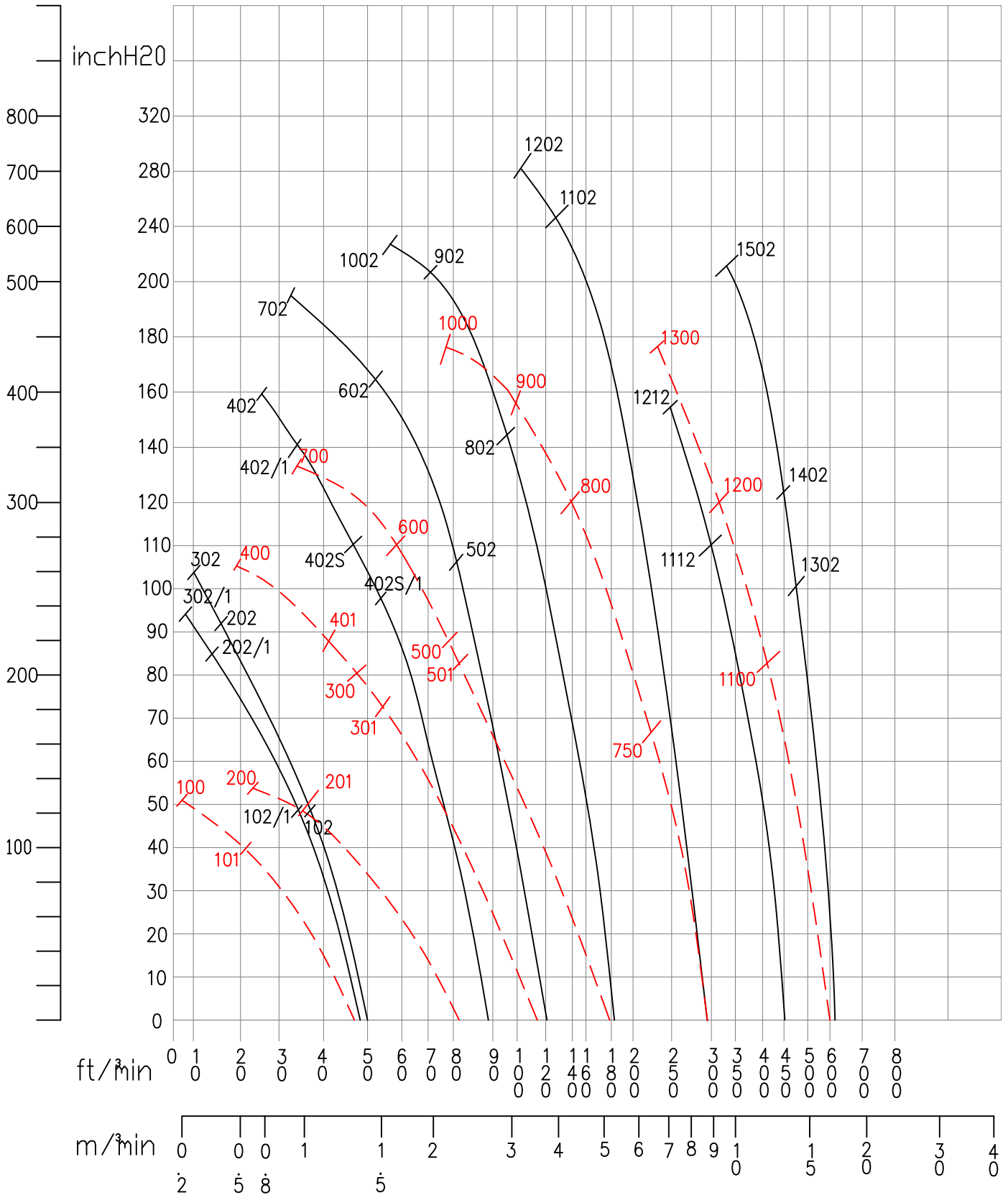
m<sup>3</sup>/min

Curves in RED are single stage.  
Curves in BLACK are two stage.



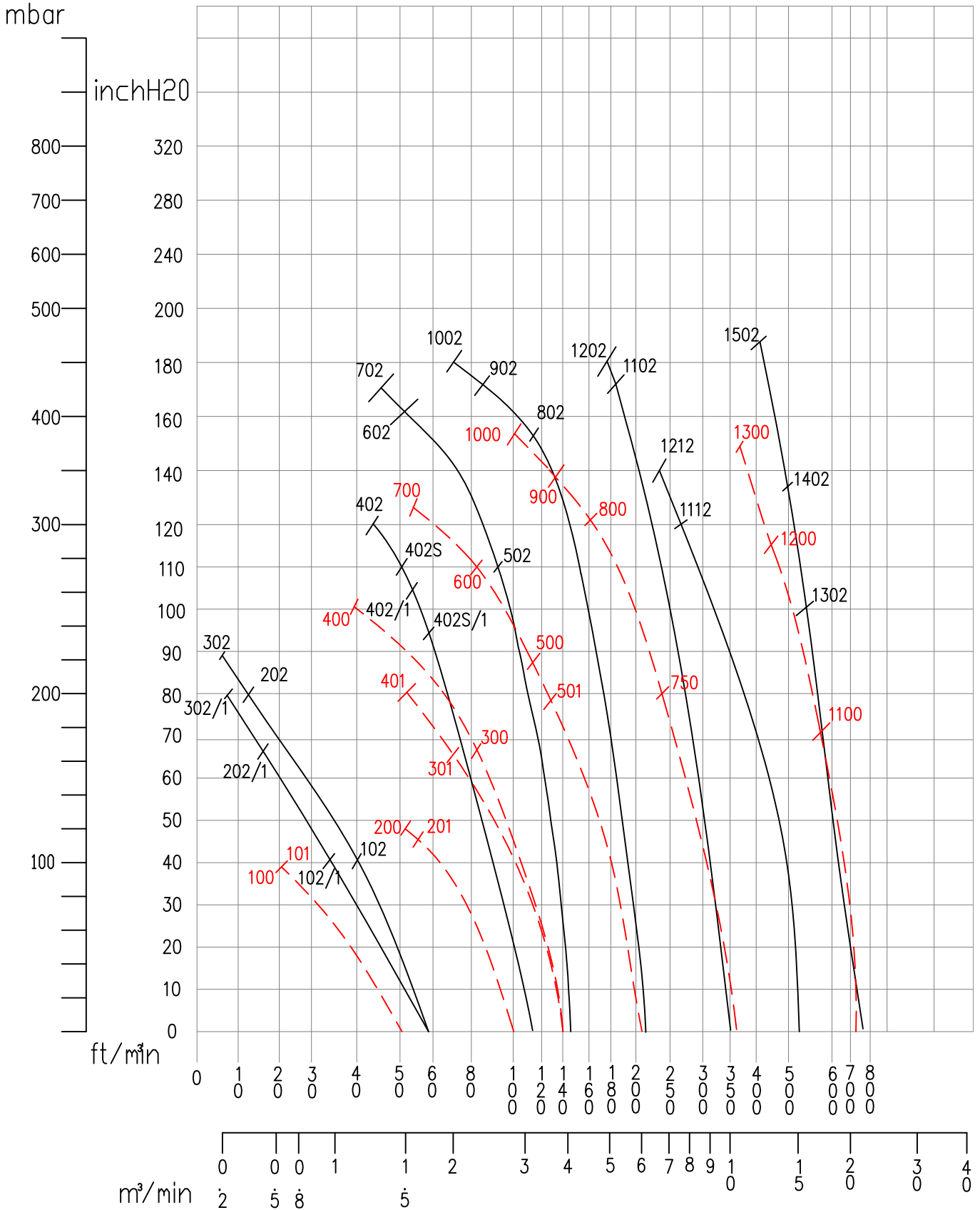
# 50 Hz Pressure Curve

mbar



Curves in RED are single stage.  
Curves in BLACK are two stage.

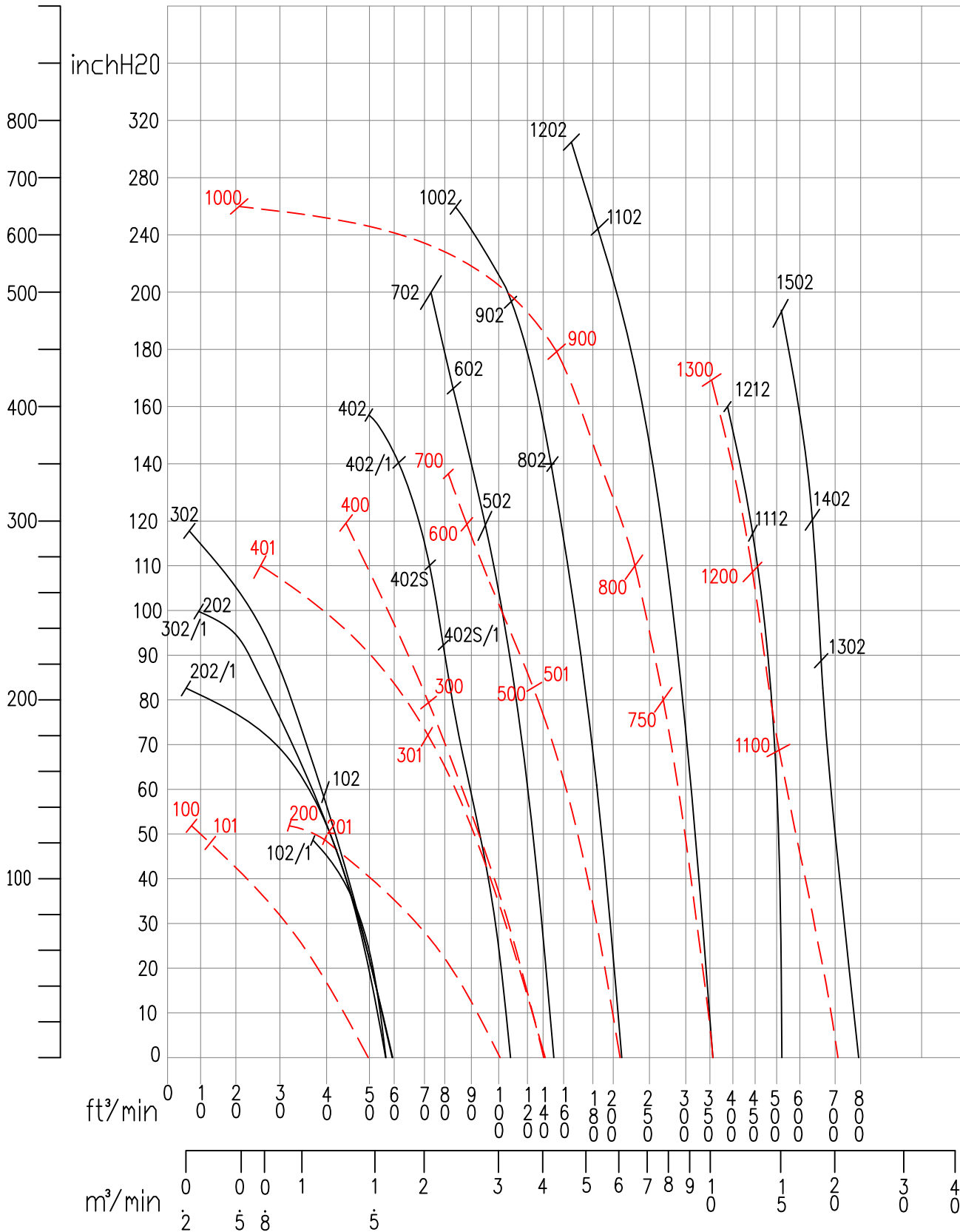
# 60 Hz Vacuum Curve



Curves in RED are single stage.  
 Curves in BLACK are two stage.

# 60 Hz Pressure Curve

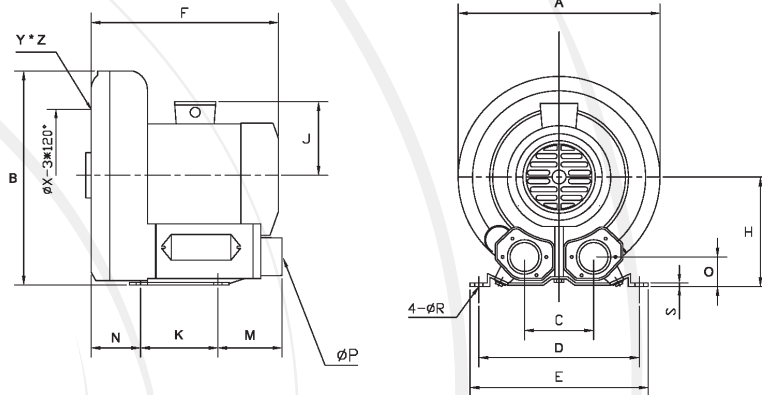
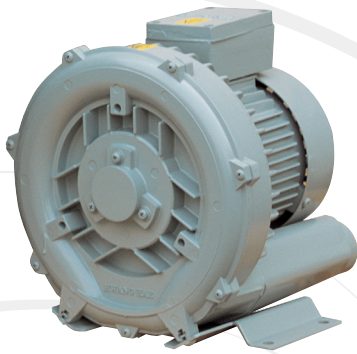
mbar



Curves in RED are single stage.  
Curves in BLACK are two stage.



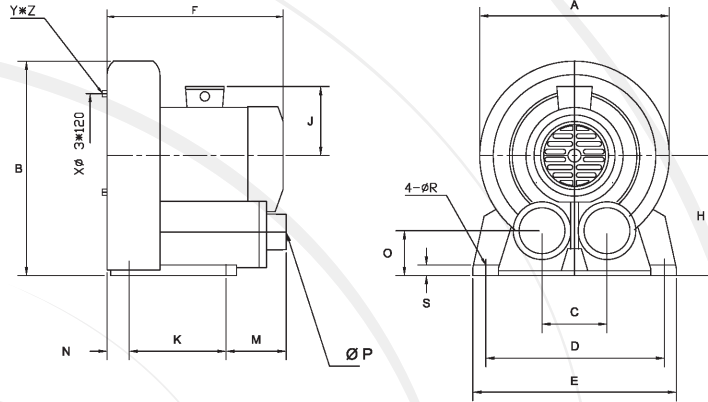
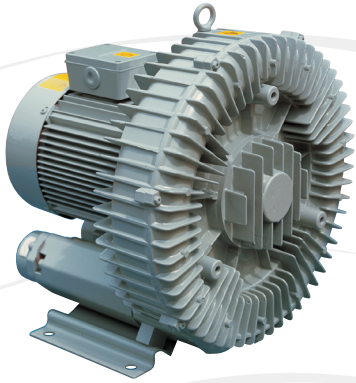
# Single Stage



MODEL	KW	HP	A	B	C	D	E	F	H
HRB-101	0.4	0.50	9.69	9.72	3.54	8.07	9.06	9.84	5.04
HRB-201	0.75	1.00	11.22	11.89	4.53	8.86	10.04	11.45	6.1
HRB-301	1.5	2.00	13.19	13.27	4.72	10.24	11.62	13.31	6.89
HRB-401	2.2	3.00	13.19	13.27	4.72	10.24	11.62	14.09	6.89
HRB-501	2.2	3.00	13.19	13.46	4.72	10.24	11.62	15.12	6.89
HRB-100	0.5	0.67	9.69	9.72	3.54	8.07	9.06	9.33	5.04
HRB-200	0.93	1.25	11.22	11.89	4.53	8.86	10.04	10.63	6.1
HRB-300	1.75	2.35	13.19	13.27	4.72	10.24	11.62	12.51	6.89
HRB-400	2.55	3.50	13.19	13.27	4.72	10.24	11.62	13.31	6.89
HRB-500	2.55	3.50	15.04	15.12	4.82	11.42	12.8	14.17	7.83
HRB-600	3.7	5.00	15.04	15.12	4.82	11.42	12.8	14.96	7.83
HRB-700	4.6	6.00	15.04	15.12	4.82	11.42	12.8	15.76	7.83

MODEL	J	K	M	N	O	ØP	ØR	S	X	Y*Z
HRB-101	4.92	3.27	4.13	2.54	1.54	1.25	0.39	0.10	5.51	M6
HRB-201	4.92	3.74	4.21	2.83	1.81	1.50	0.47	0.10	6.85	M6
HRB-301	5.43	4.53	5.00	3.35	1.89	2.00	0.59	0.16	7.87	M8
HRB-401	5.43	4.53	5.00	3.35	1.89	2.00	0.59	0.16	7.87	M8
HRB-501	5.43	4.53	5.00	3.35	1.89	2.00	0.59	0.16	7.87	M8
HRB-100	4.92	3.27	4.13	2.52	1.54	1.25	0.39	0.10	5.51	M6
HRB-200	4.92	3.74	4.21	2.83	1.81	1.50	0.47	0.10	6.85	M6
HRB-300	5.43	4.53	5.00	3.35	1.89	2.00	0.59	0.16	7.87	M8
HRB-400	5.43	4.53	5.00	3.35	1.89	2.00	0.59	0.16	7.87	M8
HRB-500	5.43	5.51	4.53	4.25	2.13	2.00	0.59	0.16	9.48	M10
HRB-600	6.38	5.51	4.53	4.25	2.13	2.00	0.59	0.16	9.48	M10
HRB-700	6.38	5.51	4.53	4.25	2.13	2.00	0.59	0.16	9.48	M10

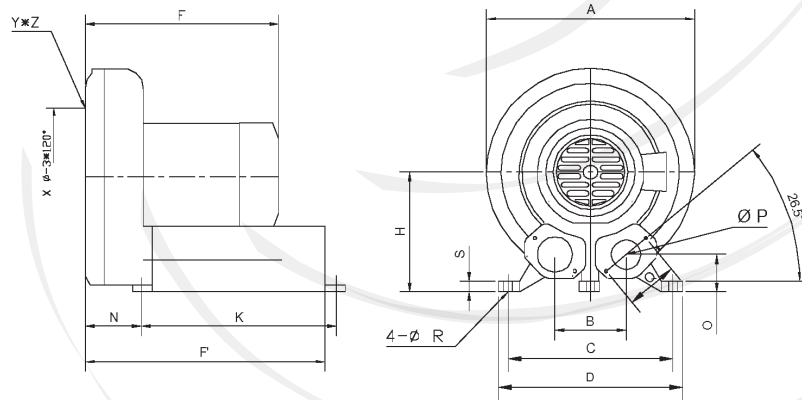
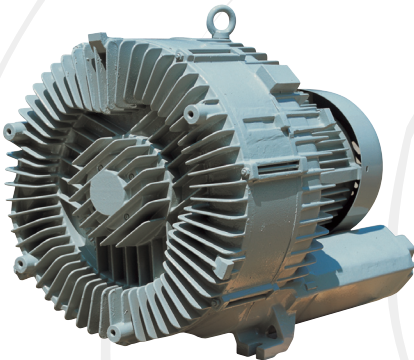
# Single Stage



MODEL	KW	HP	A	B	C	D	E	F	H
HRB-750	4.6	6.00	19.48	20.47	5.86	14.29	16.61	19.68	10.45
HRB-800	6.3	8.50	19.88	20.47	5.90	14.37	16.73	20.47	10.80
HRB-900	8.6	11.50	19.88	20.47	5.90	14.37	16.73	20.87	10.80
HRB-1000	11.0	15.00	19.88	20.47	7.50	14.37	16.63	24.61	10.75

MODEL	J	K	M	N	O	$\varnothing P$	R	S	X	Y*Z
HRB-750	6.37	11.41	7.28	0.69	3.14	2.5/3	0.59	1.00	16.00	M12
HRB-800	7.08	11.41	7.28	0.67	3.54	2.50	0.59	1.02	10.06	M12
HRB-900	7.08	11.41	7.28	0.67	3.54	2.50	0.59	1.02	10.06	M12
HRB-1000	9.94	11.41	7.28	0.67	19.75	2.5/3	0.31	1.02	10.06	M12

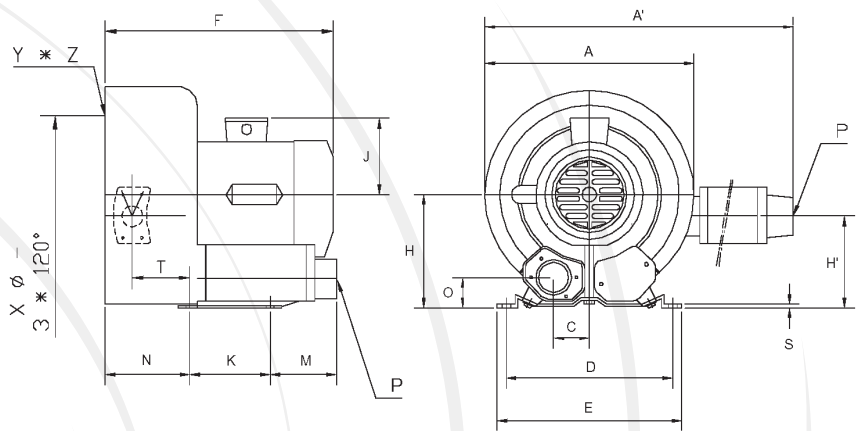
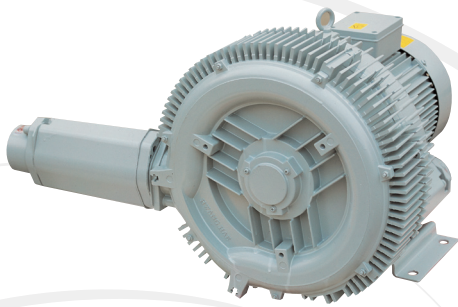


MODEL	KW	HP	A	B	C	D	F	F'	H
HRB-1100	11	15.00	21.65	8.35	14.17	16.34	20.08	27.17	11.81
HRB-1200	15.3	20.00	21.65	8.35	14.17	16.34	22.05	27.17	11.81
HRB1300	22.7	30.00	21.65	8.35	14.17	16.34	22.05	27.17	11.81

MODEL	K	N	O	$\varnothing P$	Q	$\varnothing R$	S	X	Y*Z
HRB-1100	24.02	4.17	3.58	4	5.91	0.59	0.98	19.29	M12
HRB-1200	24.02	4.17	3.58	4	5.91	0.59	0.98	19.29	M12
HRB-1000	24.02	4.17	3.58	4	5.91	0.59	0.98	19.29	M12

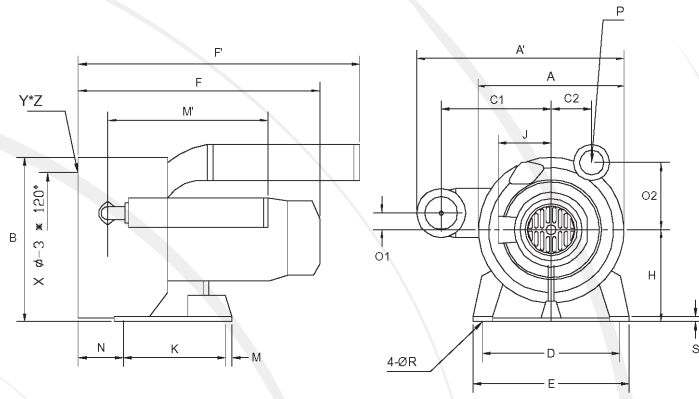
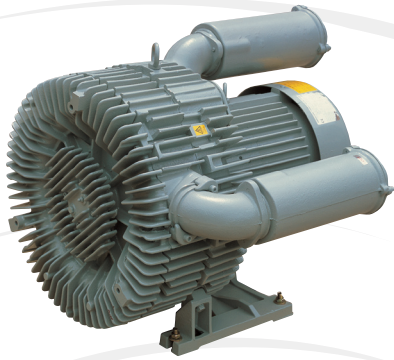
# Double Stage



MODEL	KW	HP	A	A'	C	D	E	F	H	H'	
HRB-102/1	0.40	0.50	11.18	19.49	1.77	8.07	9.06	12.60	5.04	4.17	
HRB-202/1	0.75	1.00	11.18	19.49	1.77	8.07	9.06	14.06	5.04	4.17	
HRB-302/1	1.10	1.50	11.18	19.49	1.77	8.07	9.06	14.06	5.04	4.17	
HRB-402/1	2.20	3.00	12.64	20.39	2.26	8.86	10.04	17.87	6.06	6.06	
HRB-402S/1	1.50	2.00	12.64	20.39	2.26	8.86	10.04	17.09	6.06	6.06	
HRB-102	0.50	0.67	11.18	19.49	1.77	8.07	9.06	12.09	5.04	4.17	
HRB-202	0.89	1.20	11.18	19.49	1.77	8.07	9.06	12.61	5.04	4.17	
HRB-302	1.50	2.00	11.18	19.49	1.77	8.07	9.06	14.06	5.04	4.17	
HRB-402S	1.75	2.35	12.64	20.39	2.26	8.86	10.04	16.30	6.06	6.06	
HRB-402	2.55	3.50	12.64	20.39	2.26	8.86	10.04	17.09	6.06	6.06	
HRB-502	2.55	3.50	14.57	24.56	2.36	10.24	11.61	16.93	6.89	5.79	
HRB-602	3.70	5.00	14.57	24.56	2.36	10.24	11.61	17.72	6.89	5.79	
HRB-702	4.60	6.00	14.57	24.56	2.36	10.24	11.61	18.50	6.89	5.79	
HRB-802	4.60	6.00	16.73	26.14	2.42	11.42	12.80	20.35	7.76	6.58	
HRB-902	6.30	8.50	16.73	26.14	2.42	11.42	12.80	22.05	7.76	6.58	
HRB-1002	8.60	11.50	16.73	26.14	2.42	11.42	12.80	22.83	7.76	6.58	
MODEL	J	K	M	N	O	ØP	ØR	S	T	X	Y*Z
HRB-102/1	4.92	3.27	4.21	5.12	3.50	1.25	0.39	0.10	3.46	5.51	M6
HRB-202/1	4.92	3.27	4.21	5.12	3.50	1.25	0.39	0.10	3.46	5.51	M6
HRB-302/1	4.92	3.27	4.21	5.12	3.50	1.25	0.39	0.10	3.46	5.51	M6
HRB-402/1	5.43	3.74	4.21	5.71	1.81	1.50	0.47	0.10	3.82	6.85	M6
HRB-402S/1	5.43	3.74	4.21	5.71	1.81	1.50	0.47	0.10	3.82	6.85	M6
HRB-102	4.92	3.27	4.22	5.12	3.50	1.25	0.39	0.10	3.46	5.51	M6
HRB-202	4.92	3.27	4.22	5.12	3.50	1.25	0.39	0.10	3.46	5.51	M6
HRB-302	4.92	3.27	4.22	5.12	3.50	1.25	0.39	0.10	3.46	5.51	M6
HRB-402S	5.43	3.74	4.21	5.59	1.81	1.50	0.47	0.10	3.82	6.85	M6
HRB-402	5.43	3.74	4.21	5.59	1.81	1.50	0.47	0.10	3.82	6.85	M6
HRB-502	5.43	4.53	4.92	6.69	1.81	2.00	0.59	0.16	4.61	7.87	M8
HRB-602	5.43	4.53	4.92	6.69	1.81	2.00	0.59	0.16	4.61	7.87	M8
HRB-702	5.43	4.53	4.92	6.69	1.81	2.00	0.59	0.16	4.61	7.87	M8
HRB-802	6.30	5.50	4.53	8.27	2.01	2.00	0.59	0.18	5.08	9.45	M10
HRB-902	7.64	5.50	4.53	8.27	2.01	2.00	0.59	0.18	5.08	9.45	M10
HRB-1002	7.64	5.50	4.53	8.27	2.01	2.00	0.59	0.18	5.08	9.45	M10

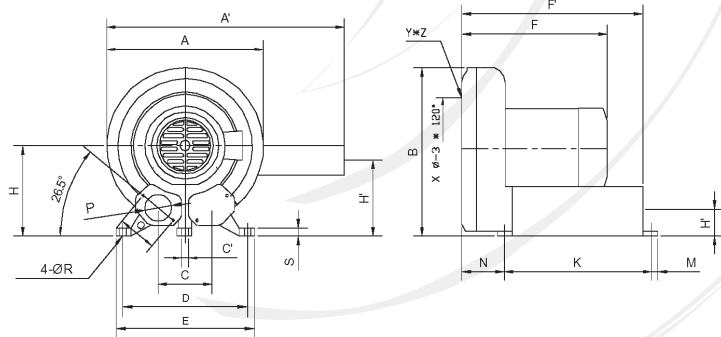
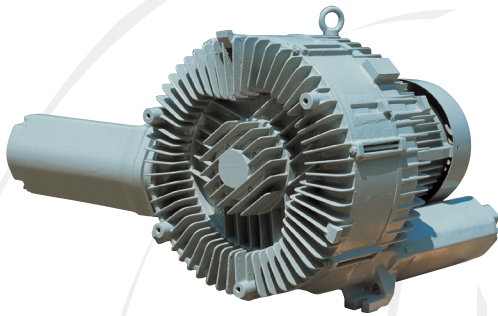


# Double Stage



MODEL	KW	HP	A	A'	B	C2	D	E	F	F'	H
HRB-1102	12.6	16.90	19.88	25.20	20.47	2.87	14.37	16.54	24.02	23.43	10.43
HRB-1202	17.3	23.20	19.88	25.20	20.47	2.87	14.37	16.54	25.98	23.43	10.43

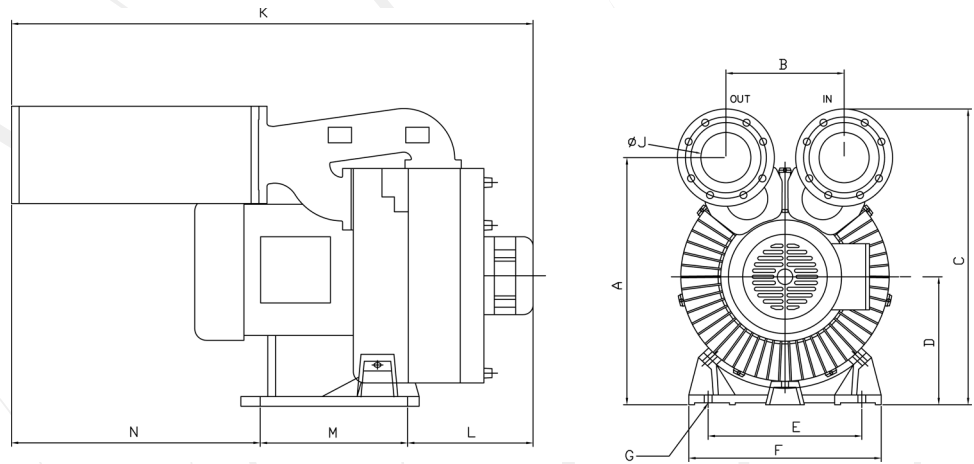
MODEL	J	K	M	M'	O1	O2	ØP	ØR	S	X	Y*Z
HRB-1102	10.04	11.42	6.69	15.83	2.60	7.24	2.50	0.59	1.02	16.06	M12
HRB-1202	10.04	11.42	6.69	15.83	2.60	7.24	2.50	0.59	1.02	16.06	M12



MODEL	KW	HP	A	A'	C	C'	D	E	F	F'	H	H'
HRB-1112	12.5	16.80	21.50	38.97	7.09	0.59	16.73	19.29	25.39	30.31	11.57	8.38
HRB-1212	17.3	23.20	21.50	38.97	7.09	0.59	16.73	19.29	27.33	30.31	11.57	8.38
HRB-1302	15.5	20.00	21.65	42.13	8.35	0.59	14.17	16.33	27.36	33.07	11.81	9.65
HRB-1402	18.50	25.00	21.65	42.13	8.35	0.59	14.17	16.33	29.33	33.07	11.81	9.65
HRB-1502	26.80	35.00	21.65	42.13	8.35	0.59	14.17	16.33	29.33	33.07	11.81	9.65
HRB-1602	37.00	50.00	21.65	42.13	8.35	0.59	14.17	16.33	33.46	33.07	11.81	9.65

MODEL	J	K	M	N	O	ØP	Q	ØR	S	X	Y*Z
HRB-1112	10.04	16.73	0.79	5.55	3.18	2.50	5.91	0.59	1.02	19.29	M12
HRB-1212	10.04	16.73	0.79	5.55	3.18	2.50	5.91	0.59	1.02	19.29	M12
HRB-1302	10.04	14.17	0.79	9.45	3.58	4.00	5.91	0.59	0.98	19.29	M12
HRB-1402	10.04	14.17	0.79	9.45	3.58	4.00	5.91	0.59	0.98	19.29	M12
HRB-1502	10.04	14.17	0.79	9.45	3.58	4.00	5.91	0.59	0.98	19.29	M12
HRB-1602	10.04	14.17	0.79	9.45	3.58	4.00	5.91	0.59	0.98	19.29	M12

## Double Stage

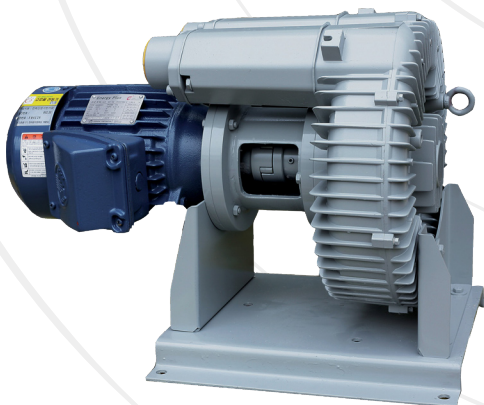


MODEL	KW	HP	A	B	C	D	E	F
HRB-1503	15	20	25.00	12.00	29.92	12.95	15.59	19.53
HRB-1603	22	30	25.00	12.00	29.92	12.95	15.59	19.53
HRB-1703	30	40	25.00	12.00	29.92	12.95	15.59	19.53

MODEL	G	J	K	L	M	N	Y*Z
HRB-1503	0.79	5.10	52.99	12.76	14.96	25.28	M15
HRB-1603	0.79	5.10	52.99	12.76	14.96	25.28	M15
HRB-1703	0.79	5.10	52.99	12.76	14.96	25.28	M15

## Many Options Available

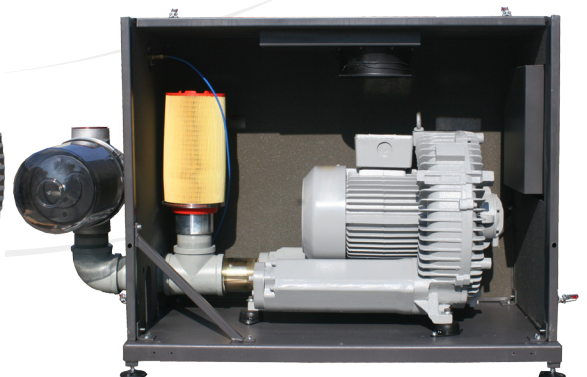
- ▲ “Direct Coupled” Packages
- ▲ All Models Available
- ▲ Explosion Proof Motors Available
- ▲ Specialty Motors Available
- ▲ Wash Down Motors Available
- ▲ Enclosures Available



Coupling Connected Blowers



Bare Shaft Blowers



Enclosures



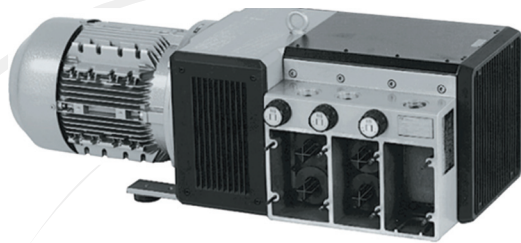


## Republic Centrifugal Blowers

- ▲ RB500 (up to 500 cfm)
- ▲ RB800 (up to 800 cfm)
- ▲ RB1200HC (up to 2000 cfm)
- ▲ RB2000 (up to 2000 cfm)
- ▲ RB2400 (up to 2400 cfm)
- ▲ RB3000 (up to 3000 cfm)

## Republic Regenerative Blowers

- ▲ Single or Double Stage Blowers
- ▲ Belt-Driven Bare Shaft Blowers
- ▲ Explosion-Proof Motors

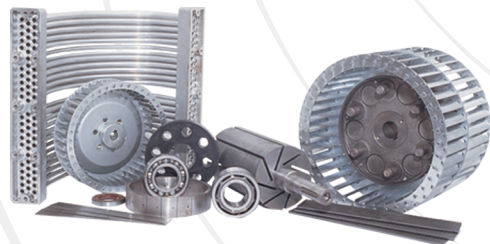


## Rietschle Vacuum Pumps

- ▲ Rotary vane vacuum pumps, compressors, regenerative blowers and radial compressors
- ▲ Large inventory of new and used pumps, blowers, parts, and filters

## Positive Displacement Blowers

- ▲ Rotary positive blowers, gas pumps, vacuum pumps
- ▲ Discharge pressure to 30 psig, vacuum to 27" Hg
- ▲ Capabilities to 5600 cfm



## Parts, Filters, and Repairs

- ▲ Master distributor of MANN-Filters
- ▲ Large inventory in stock
- ▲ Factory-trained technicians
- ▲ Authorized warranty repair center
- ▲ 24-hour emergency service

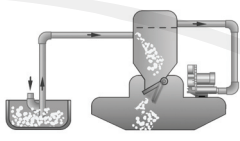


REPUBLIC  
Sales & Manufacturing®



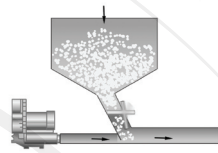


## Chemical Processing Applications - Liquid or Solids



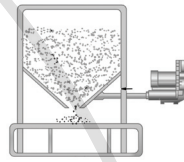
**Chemicals**

Easily transfer powders and other chemicals.



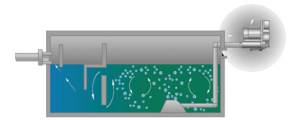
**Pellets/Solids Transfer**

Transfer pellets, foam, granules and other light solids.



**Hopper Processes**

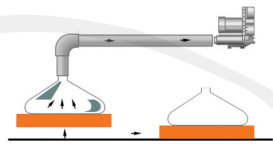
Form air layers to facilitate loading granules.



**Water/Liquid Processing**

Mix sediment, chemicals, paint and other liquids.

## Manufacturing Applications



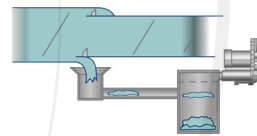
**Vacuum Transfer**

Move light materials via vacuum transfer.



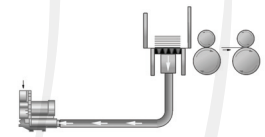
**Cutting/Stamping**

Remove excess material in cutting and stamping processes.



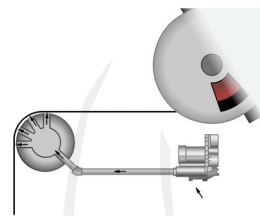
**Scrap Collection**

Remove and dispose of excess packaging material.



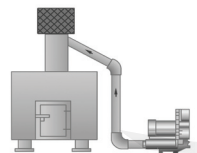
**Batch Processing**

Process cards, cash, mail, sheeting and other routine sorting projects.



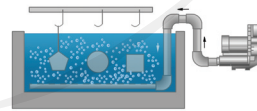
**Air Bearing**

Reduce friction on roller conveyors and presses.



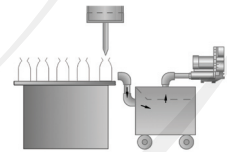
**Furnace Efficiency**

Improve combustion while aiding the removal of waste gases.



**Parts Processing**

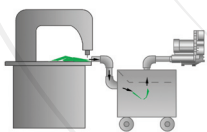
Circulate water and other liquids around parts for cleaning or coating



**Packaging**

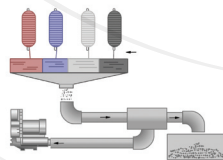
Collect dust and debris remaining on or around automatic packaging machines.

## Textiles Applications



**Industrial Sewing Machines**

Assist in the sewing process.



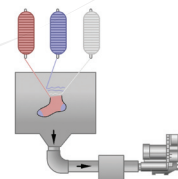
**Automatic Loom Machines**

Keep threads and yarn in place during processing.



**Excess Cloth Removal**

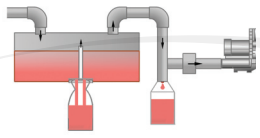
Remove leftover cloth and threads after trimming.



**Knitting**

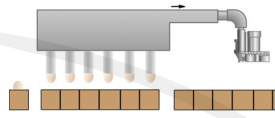
Hold product in position during knitting, sewing, and applique processing.

## Bottling/Food Processing



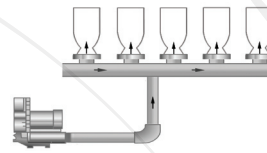
**Bottling**

Fill, cap and dry bottles.



**Food Processing**

Gently handle fragile food products like eggs.



**Labeling**

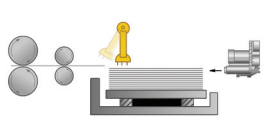
Dry bottles and cans prior to labeling.



**Feeding**

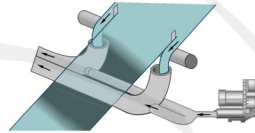
Feed paper into printing machines.

## Printing Process Applications



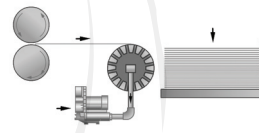
**Paper Transfer**

Move paper through the printing process.



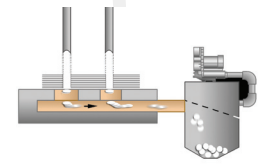
**Excess Removal**

Remove and eliminate tape or paper end of rolls.



**Post Processing - Sorting**

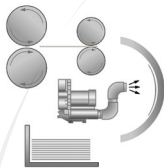
Sort and count cards, envelopes and paper



**Punch Collection**

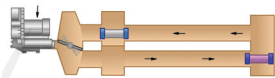
Collect waste paper after hole punch processing.

## Other Applications



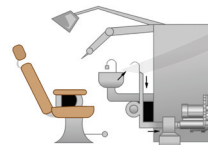
**Paper Drying**

Aid ink drying process.



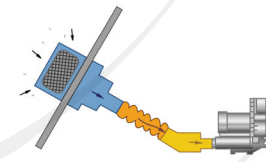
**Banking**

Shoot containers through duct work with forced air.



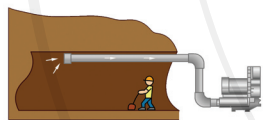
**Medical and Dentistry**

Adapts to vacuum-based medical and dental equipment.



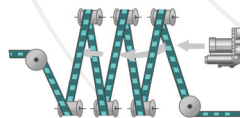
**Laundry**

Evaporate excess moisture after cleaning.



**Construction/Clean Rooms**

Remove powders, dust and gases from tunnels, laboratories, clean rooms or other enclosed spaces.



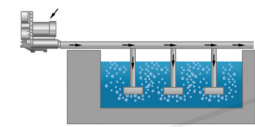
**Photography**

Dry moving film or other rolled product.



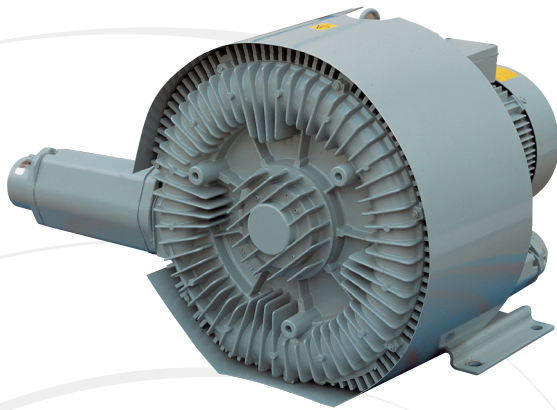
**Spas and Whirlpools**

Aerate indoor or outdoor pools for medicinal and relaxing effects.



**Pool or Tank Aeration**

Supply oxygen to fishing and landscaped ponds.



### Installation

- ▲ Units can be installed and mounted in any axial direction. For quiet and vibration-free operation, install the unit over a rubber pad.
- ▲ Do not obstruct the cooling system of the motor. Keep all ventilation gratings open and clear.
- ▲ Minimum clearance (1.5") must be maintained between the unit and all side walls or other barriers.
- ▲ Keep all flammable gases and materials away from the unit.
- ▲ After installation be sure to tighten the eye-bolt.
- ▲ The system voltage and frequency is the same as stated on the rating plate  $\pm 5\%$  voltage and/or  $\pm 2\%$  frequency deviation from the rated value without reducing output. Connections should be arranged and attached according to the circuit diagram on the terminal box. The ground wire should be connected to the grounding terminal.

### Maintenance

- ▲ Cleaning: When dust or residue is evident, clean the entire surface of the blower.
- ▲ Lubrication: After approximately 20,000 hours of operation, or 18 months, replace the grease in the bearings.

### General Notice

- ▲ Republic Regenerative Blowers are designed for handling air and non-flammable, non-corrosive, non-explosive gases.
- ▲ These blowers are designed for continuous use. Applications involving frequent temperature changes should be evaluated by our technical department prior to installation. Maximum ambient temperature at the inlet is 104°F (40°C).
- ▲ Intake filtration should be used to eliminate solids and impurities from entering the blower.

### Accessories

- ▲ Centrifugal Blowers
- ▲ Air Knives (Aluminum, Stainless Steel, Steel)
- ▲ Stainless Steel Y-branches, Elbows, Hose Clamps, and Piping
- ▲ Stainless Steel Nozzles
- ▲ Stainless Steel Air Knife Support Brackets
- ▲ Air Knife and Blower Motor Enclosures available in Powder Coated or Stainless Steel Design
- ▲ Stainless Steel 3, 4, 5 and 6 Outlet Manifolds
- ▲ Stainless Steel HEPA Filters for Clean Room Environments



**R E P U B L I C**  
*Blower Systems®*

### Republic Blower Systems®

5131 Cash Road  
Dallas, TX 75247  
Tel 214-631-8070  
Fax 214-631-3673

### Call today

for help with your application.

**Toll-free 1-800-847-0380**

or visit our website at:

**[www.RepublicSales.com](http://www.RepublicSales.com)**